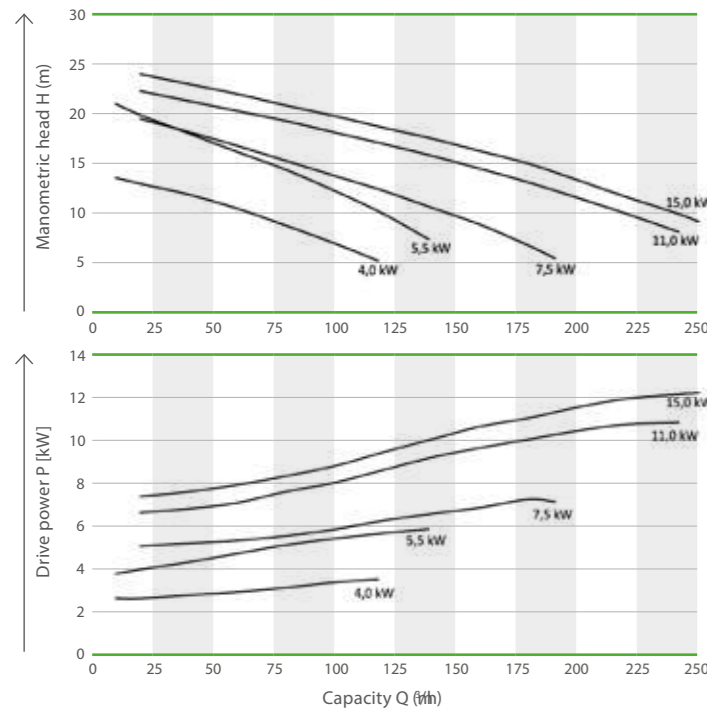
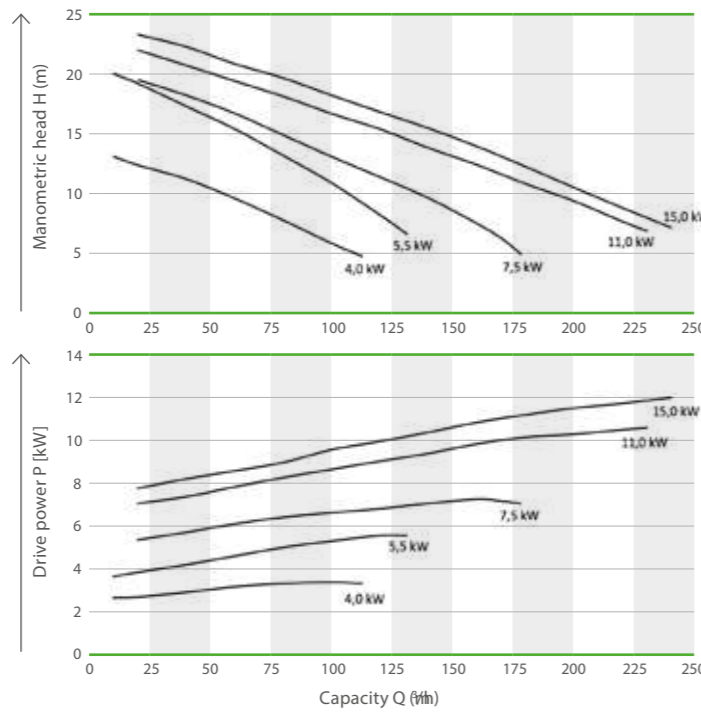


TECHNICAL DATA

Characteristic curves MAGNUM ESPH



Characteristic curves MAGNUM CSPH



Submersible Motor Pump MAGNUM ESP without cutting device

Model	Discharge t/h	Discharge head m	max. drive power kW	max. Ampere A	Drive speed m/h	Delivery connection mm
ESPH 4	20 – 100	13,0 – 7,0	4,0	8,1	1.450	DN 80
ESPH 5,5	20 – 120	20,0 – 9,8	5,5	10,7	1.450	DN 80
ESPH 7,5	20 – 200	19,6 – 5,5	7,5	15,6	1.450	DN 100
ESPH 11	20 – 240	22,3 – 8,2	11	22,0	1.450	DN 100
ESPH 15	20 – 250	24,0 – 9,1	15	28,6	1.450	DN 100

Submersible Motor Pump MAGNUM CSP with cutting device

Model	Discharge t/h	Discharge head m	max. drive power kW	max. Ampere A	Drive speed m/h	Delivery connection mm
CSPH 4	20 – 100	12,3 – 5,9	4,0	8,1	1.450	DN 80
CSPH 5,5	20 – 120	19,2 – 8,2	5,5	10,7	1.450	DN 80
CSPH 7,5	20 – 120	19,2 – 8,2	7,5	14,9	1.445	DN 80
CSPH 7,5	20 – 180	19,5 – 5,1	7,5	15,6	1.450	DN 100
CSPH 11	20 – 230	22,0 – 6,9	11,0	22,0	1.450	DN 100
CSPH 15	20 – 240	23,7 – 7,4	15,0	28,6	1.445	DN 100

\* The CSP 7.5/50 Hz has the same hydraulic values as the CSP 5.5 (but with larger cutting reserves).

PRODUCTS FROM OUR SLURRY PROGRAM



MTXH  
Tractor mixer



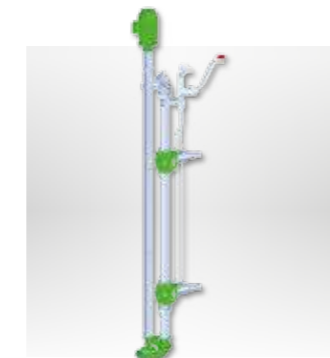
MSXH  
Submersible motor mixer



SEPARATOR  
Press screw separator for solid-liquid separation



SEPARATOR PLUG & PLAY  
System for portable slurry separation



MAGNUM LEE/LEC  
Long shaft pump



MAGNUM SM  
Thick matter pump gear unit design



MAGNUM CSPH  
Submersible motor pump gear unit design



HELIX DRIVE  
Eccentric screw pump



MAGNUM SX  
Thick matter pump gear and pedestal pump



Slurry tankers and polyester tanker  
Different tanker types for every requirement



Trailing hose applicator  
Modular system for all types of tankers



Slurry injector  
Innovative spreading technology

Your dealer



Calle 132 # 50 - 45  
Tel: (+57)(1) 626 1955 · 626 2797  
www.comercialderiegos.com  
info@comercialderiegos.com  
Bogotá, Colombia

Röhren- und Pumpenwerk BAUER GmbH  
8570 Voitsberg / Austria  
T +43 3142 200 - 0  
F +43 3142 200 - 320 / - 340  
M sales@bauer-at.com  
W www.bauer-at.com



Subject to change / MAGNUM ESPH - CSPH / 11.2016

WASTE WATER TREATMENT

# MAGNUM ESPH / CSPH

SUBMERSIBLE MOTOR PUMP IN EFFLUENT AND CUTTING DESIGN



# MAGNUM ESPH / CSPH

The BAUER submersible motor pumps impresses with singular performance, versatile application and long lifespan.

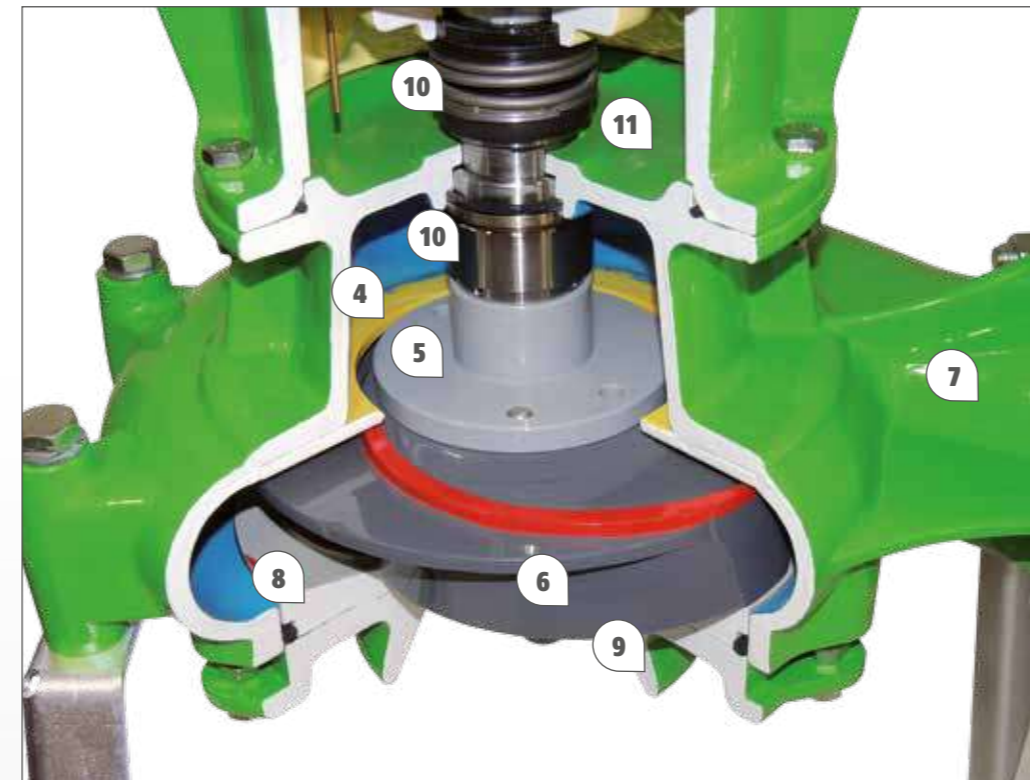
## THE FACTS

- Conveying capacities up to 250 m<sup>3</sup>/h
- Outstanding cutting performance
- High quality chrome steel cutting unit
- Submersible rotary motor 4,0 – 15,0 kW with insulation class H (optional)
- Higher flow rate efficiency class IE 2
- Temperature control for application in biogas plants
- Additional security thanks to leakage sensors
- High efficiency, low operating costs

- 1 Leakage sensor
- 2 Casted terminal box
- 3 Submersible motor

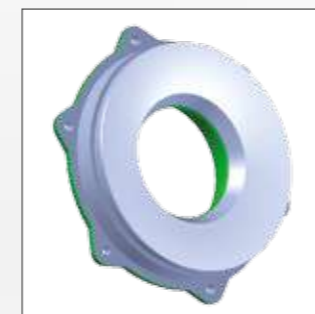


- 4 Wear disc
- 5 Impeller hub
- 6 Impeller
- 7 Spiral housing
- 8 Cutting device
- 9 Suction bell
- 10 Mechanical sealing
- 11 Oil collection



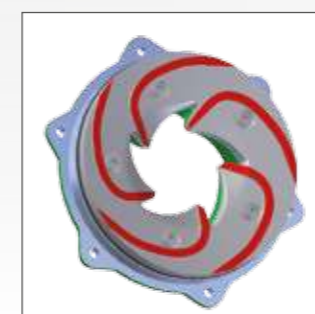
### Higher flow rate

The new designed suction bell of the MAGNUM CSP accelerates the flow of the media.



### Long lifespan

The new cutting device of the MAGNUM CSP is adjustable and easy to replace. The use of high quality chrome-steel clearly improves the lifespan of the pump.

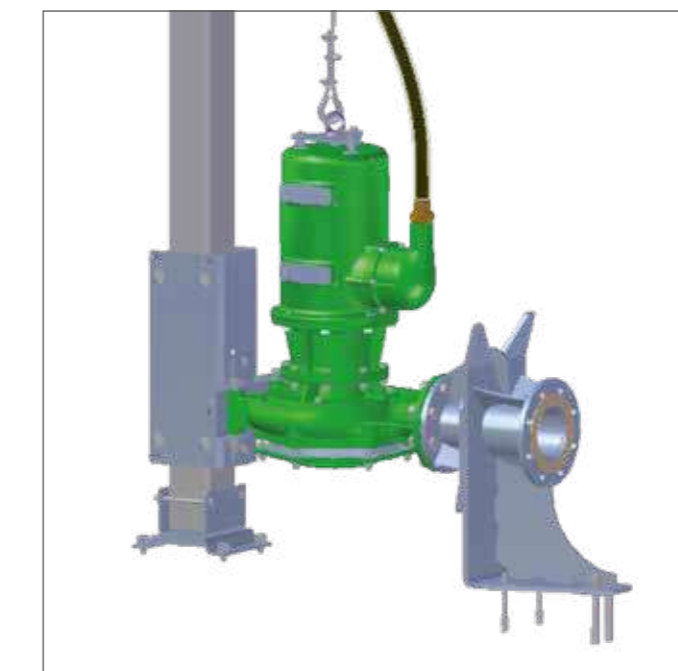
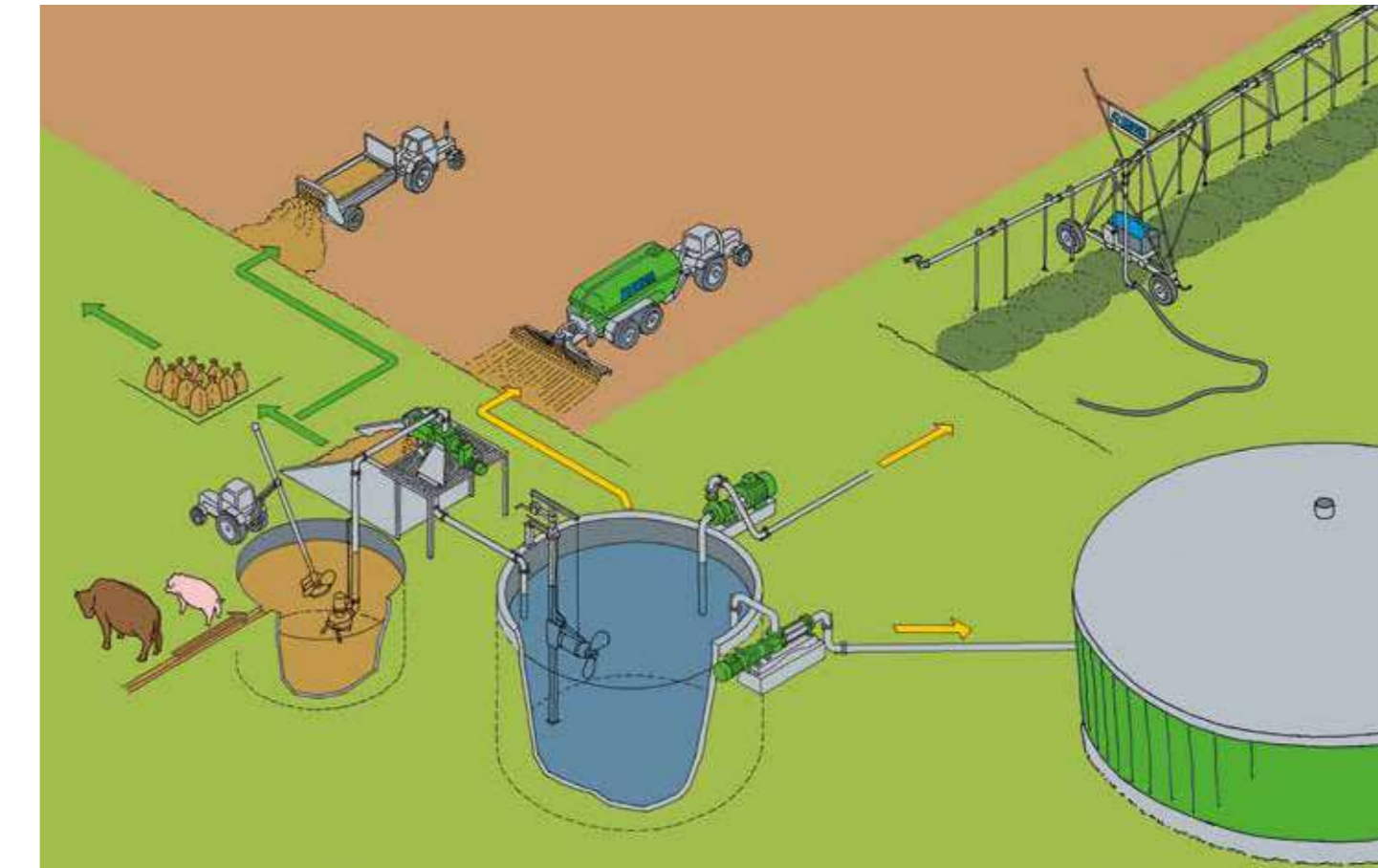


### Three way cock

With rigid stirring nozzle for ESPH / CSPH from 7,5 – 15 kW



## The refinement of manure into valuable nutrients Homogenizing-separating-conveying-distributing



### Coupling pedestal HK89 and HK108 for ESPH-CSPH

- Stainless steel design for long life and perfect function (1.4301)
- Easy and quick mounting
- Mounting in any kind of pit possible (floor even or gradient 1 – 2%)
- outflow flange according to DIN EN 1092-1 DN 100-PN16

